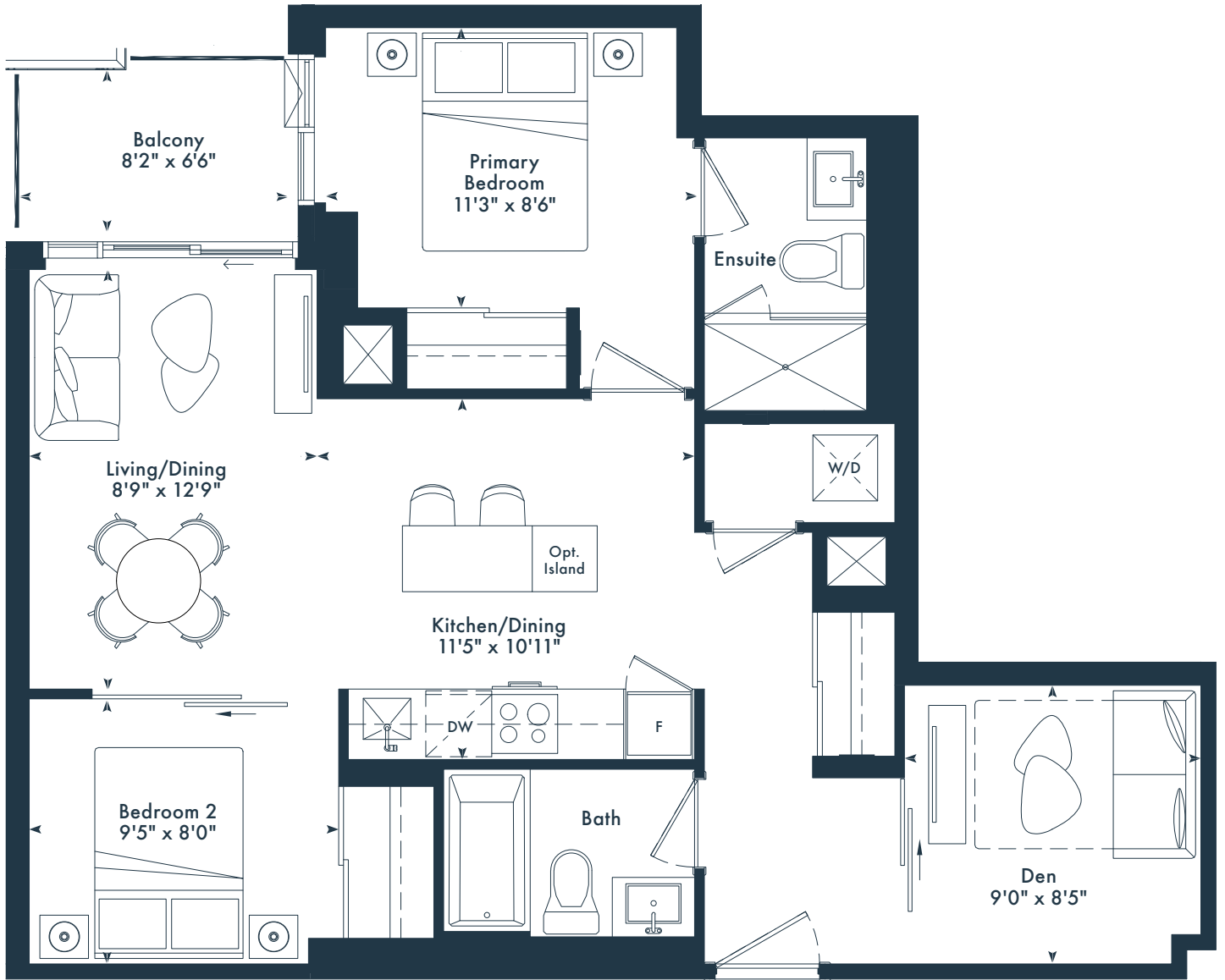


# 2BD

2 bedroom + den  
2 bath  
797 SQ. FT.

# JOYA

ON THE QUEENSWAY



5TH-6TH FLOOR



7TH FLOOR



8TH-9TH FLOOR



10TH FLOOR



11TH FLOOR

# 3H

3 bedroom  
2 bath  
1,012 SQ. FT.

# JOYA

ON THE QUEENSWAY



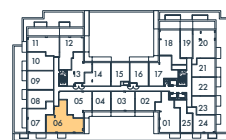
5TH-6TH FLOOR



7TH FLOOR



8TH-9TH FLOOR



10TH FLOOR



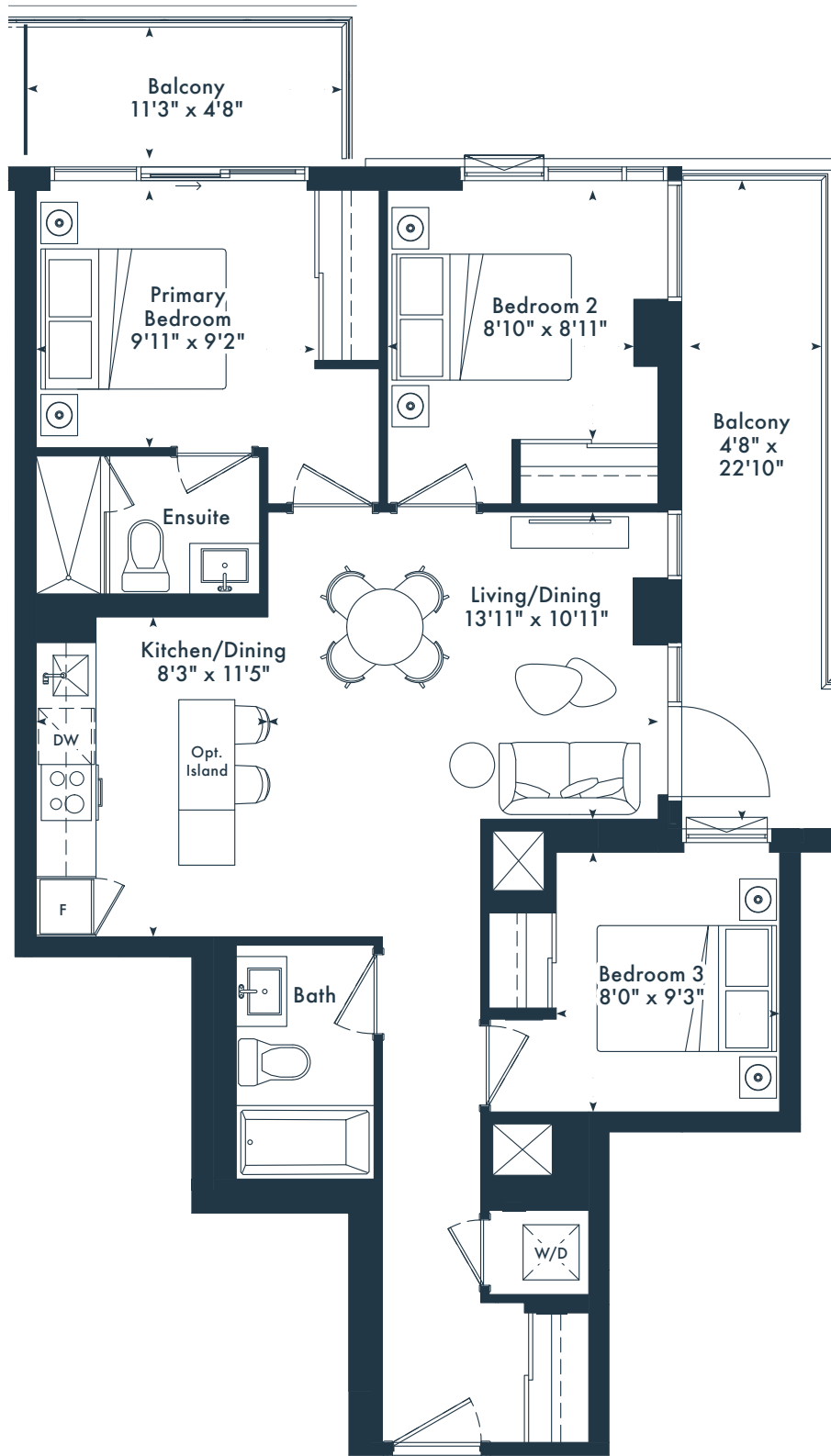
11TH FLOOR

# 3F

3 bedroom  
2 bath  
930 SQ. FT.

# JOYA

ON THE QUEENSWAY



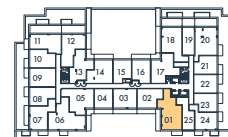
5TH-6TH FLOOR



7TH FLOOR



8TH-9TH FLOOR



10TH FLOOR



11TH FLOOR



12TH FLOOR

MARLIN  
SPRING  
DEVELOPMENTS

Greybrook

All rights reserved. Buildings and views not to scale. Some features and finishes herein are upgrades or are for illustrative purposes only and may not be available. Furniture is displayed for illustration purposes only. Layout does not necessarily reflect the electrical plan for the suite. Suites are sold unfurnished. Balcony, terrace and façade variations may apply, contact a sales representative for further details. Illustrations are artist's concept only. Prices and specifications subject to change without notice. E. & O.E. October, 2023